

CDR

S. G. No.
Approved
for
Surveyor-general

GENERAL PLAN No. OF SUBDIVISIONS OF ERF 8966 EERSTE RIVER

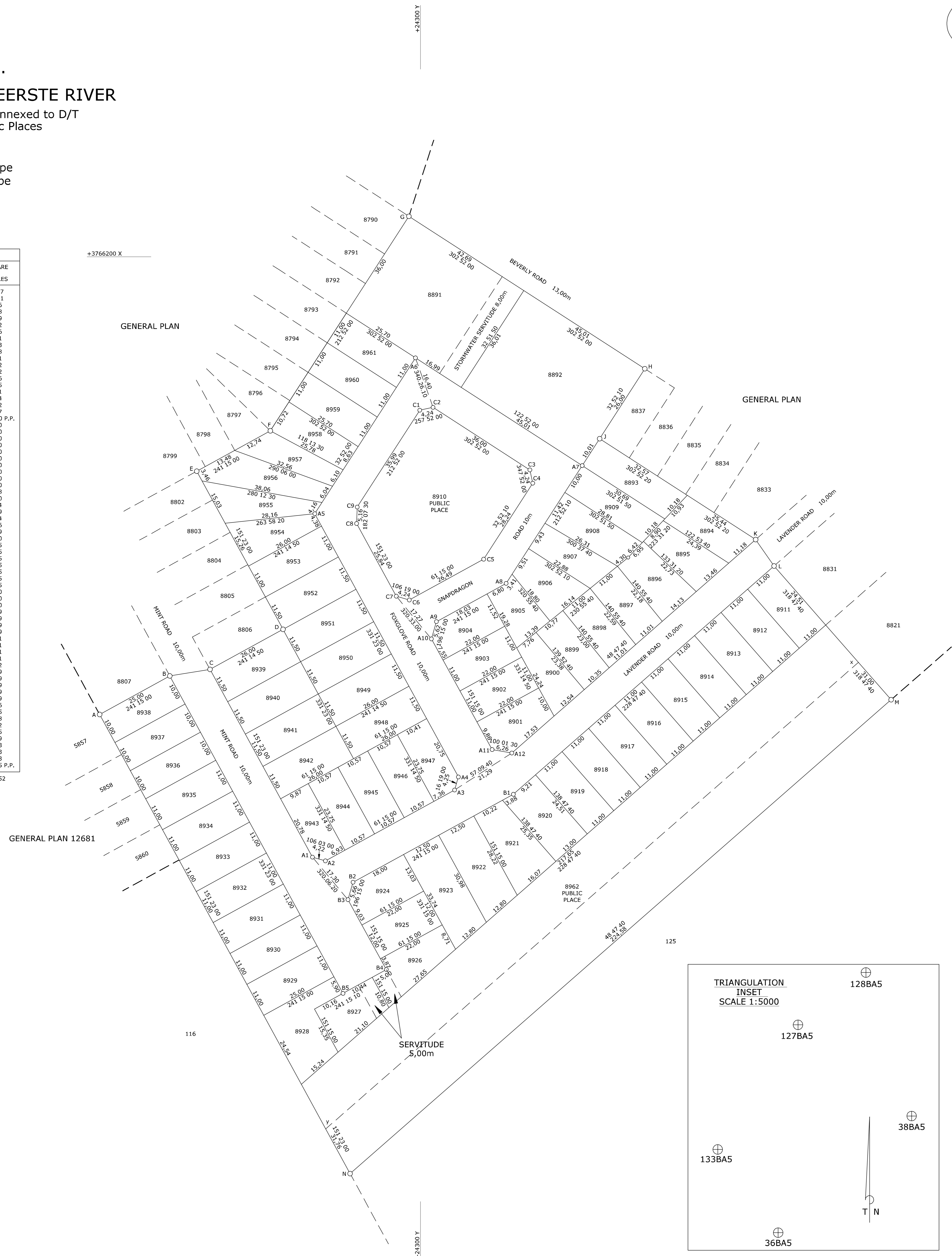
Vide Dgm. SG. No. annexed to D/T and comprising 69 Erven, 2 Public Places and the streets Situate in the Administrative District of Cape Province of the Western Cape

Scale 1: 500

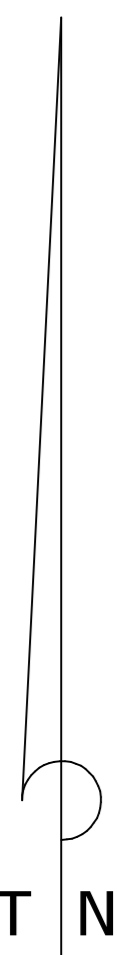
MAIN FIGURE			
SIDES	ANGLES OF	CO-ORDINATES	
METRES	DIRECTION	Y	X
		System: WG 19° X	
		0,00	
AB	25,00	241 15 00	A +24 400,19 +3 766 342,88
BC	12,72	260 46 20	B +24 378,27 +3 766 330,86
CD	26,00	241 14 50	C +24 365,72 +3 766 328,82
DE	56,25	151 23 10	D +24 342,92 +3 766 316,31
EF	26,22	241 15 00	E +24 369,86 +3 766 266,93
FG	75,72	212 51 50	F +24 346,87 +3 766 254,32
GH	87,70	302 52 00	G +24 303,61 +3 766 187,36
HJ	26,00	32 52 10	H +24 229,95 +3 766 234,95
JK	58,00	302 52 20	J +24 244,06 +3 766 256,79
KL	10,06	325 07 20	K +24 195,34 +3 766 288,27
LM	55,51	318 47 40	L +24 189,59 +3 766 296,53
MN	224,58	48 47 40	M +24 153,02 +3 766 328,29
NA	163,30	151 23 00	N +24 321,98 +3 766 486,23

BLOCK CORNERS			
A1	+24 333,74	+3 766 387,43	
A2	+24 329,68	+3 766 388,60	
A3	+24 289,35	+3 766 366,47	
A4	+24 288,16	+3 766 362,40	
A5	+24 333,01	+3 766 280,21	
A6	+24 301,57	+3 766 231,55	
A7	+24 249,49	+3 766 265,19	
A8	+24 273,25	+3 766 301,96	
A9	+24 295,02	+3 766 313,90	
A10	+24 296,59	+3 766 319,29	
A11	+24 277,64	+3 766 353,84	
A12	+24 271,47	+3 766 354,93	
B1	+24 271,00	+3 766 367,81	
B2	+24 321,06	+3 766 395,27	
B3	+24 322,64	+3 766 400,70	
B4	+24 310,67	+3 766 422,54	
B5	+24 324,20	+3 766 429,96	
C1	+24 300,22	+3 766 247,89	
C2	+24 296,08	+3 766 247,00	
C3	+24 265,84	+3 766 266,54	
C4	+24 264,95	+3 766 270,68	
C5	+24 280,28	+3 766 294,41	
C6	+24 303,50	+3 766 307,15	
C7	+24 307,56	+3 766 305,96	
C8	+24 319,94	+3 766 283,22	
C9	+24 319,75	+3 766 278,12	

AREAS	
ERF NUMBER	SQUARE METRES
8891	1537
8892	1621
8893	316
8894	268
8895	259
8896	282
8897	246
8898	251
8899	243
8900	228
8901	265
8902	242
8903	242
8904	246
8905	215
8906	261
8907	244
8908	302
8909	297
8910	1990 P.P.
8911	270
8912	270
8913	270
8914	270
8915	270
8916	270
8917	270
8918	270
8919	270
8920	320
8921	348
8922	370
8923	404
8924	279
8925	264
8926	296
8927	269
8928	400
8929	275
8930	275
8931	275
8932	275
8933	275
8934	275
8935	275
8936	250
8937	250
8938	250
8939	299
8940	299
8941	299
8942	299
8943	231
8944	251
8945	251
8946	251
8947	242
8948	299
8949	299
8950	299
8951	299
8952	299
8953	286
8954	255
8955	268
8956	332
8957	235
8958	249
8959	283
8960	283
8961	283
8962	6855 P.P.
Total	30852



Servitude Note:
1. The line xy represents the centre line of an Electric Power Transmission Servitude extending 15,50m on each side of the line, vide Dgm. No. 3449/1992, D/S K.37/97s.

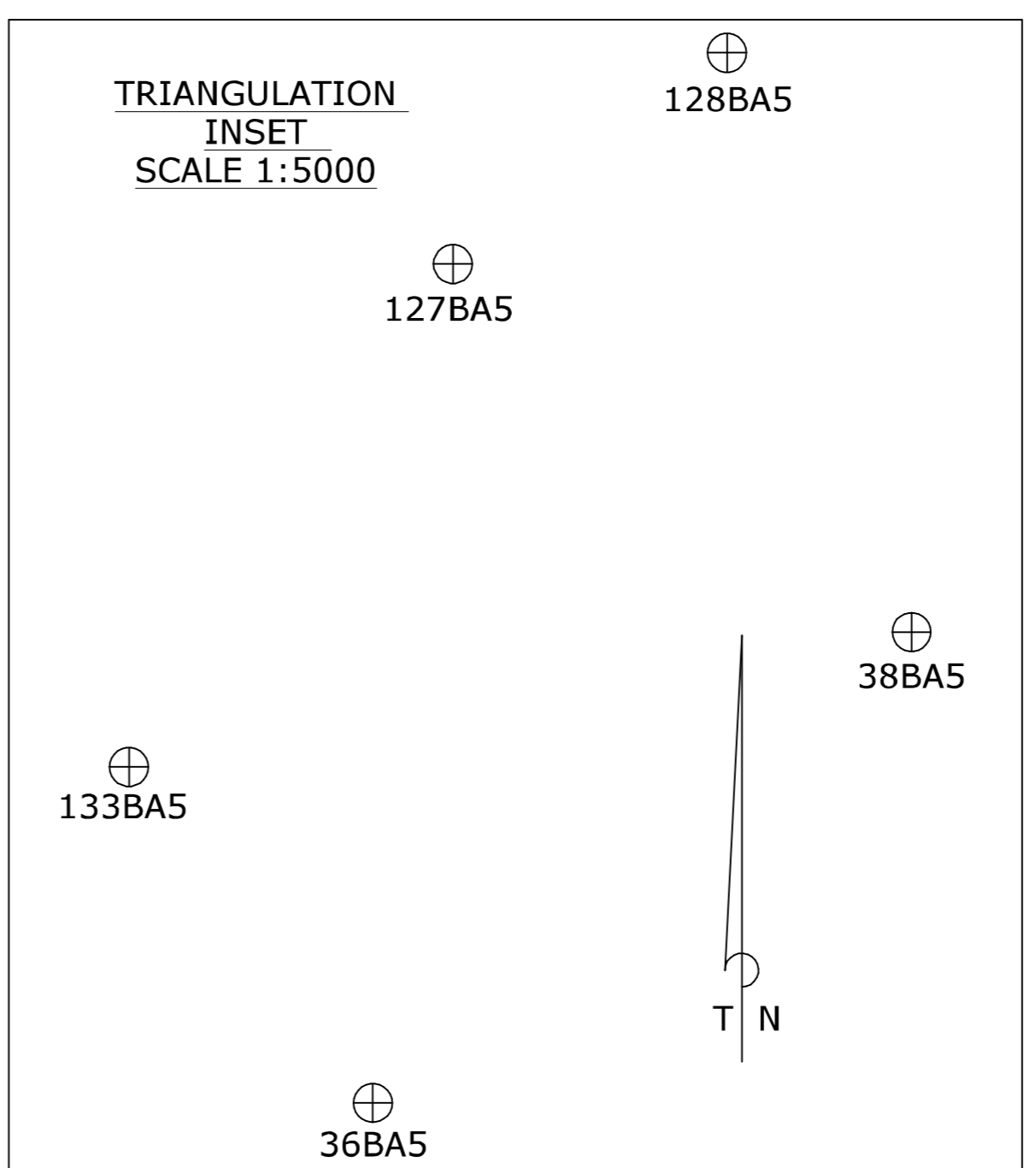


THIS GENERAL PLAN WAS FRAMED BY ME AND I UNDERTAKE TO PLACE THE BEACONS OF THE ERVEN IN POSITIONS WHICH CORRESPOND WITH THE DATA ON THIS PLAN AND TO SUBMIT THE FINAL GENERAL PLAN AND THE SURVEY RECORDS PERTAINING THERETO WITHIN THE PRESCRIBED PERIOD TO THE SURVEYOR - GENERAL FOR APPROVAL

D. H. BATES
PROFESSIONAL LAND SURVEYOR
P.L.S. No. 0035
FEBRUARY 2012

ENDORSEMENTS					
No.	AMENDMENT	ADDITION	AUTHORITY	INTD.	DATE

S. G. OFFICE NOTES



S.R. No.
Comp. AHND-2191 (M1766)
AHND-2193 (M4507)
File No. S/8989/24